

# Single Target Duplicator Quick Start Guide

## Step 1

Remove the unit from box and place it upright on a flat surface. Save packing material for storage and transport.



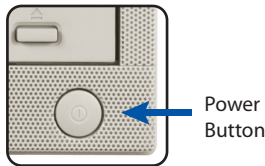
## Step 2

Connect the AC Power cord to the unit and plug it into an AC wall outlet.



## Step 3

Turn on the unit by pressing the power button located on the front of the unit.



## Step 4

Upon powering up, the display on the LCD control panel will show "1. Copy Disc" indicating the unit is ready to operate.



## Step 5

To begin the copying process, press the eject button on the top Master Drive (CD/DVD Reader Drive). When the tray opens, place the Master Disc in the tray & press the eject button to close the tray.



## Step 6

Press the eject button on the bottom CD/DVD writer drive. When the tray opens, place a blank recordable CD/DVD disc in the tray and press the eject button to close the tray.

*(CD/DVD write drive must be loaded with a blank recordable CD/DVD disc.)*



## Step 7

After completing Steps 5 & 6, the copy process will automatically begin.

*(Copying status will be displayed on the LCD Screen.)*

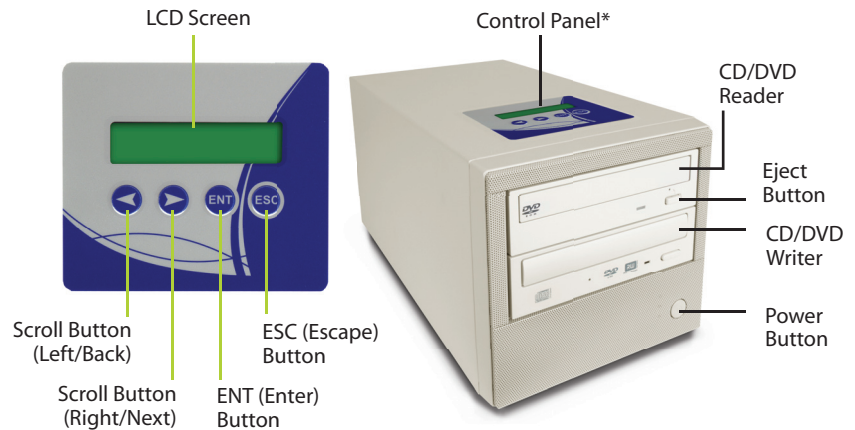


## Step 8

Upon completion of the copy process, the completed disc will automatically be ejected. Remove completed disc and repeat steps 5-8 to continue the copying process as necessary.



## CD/DVD Duplicator Controls:



\*Control Panel may vary depending on duplicator model.

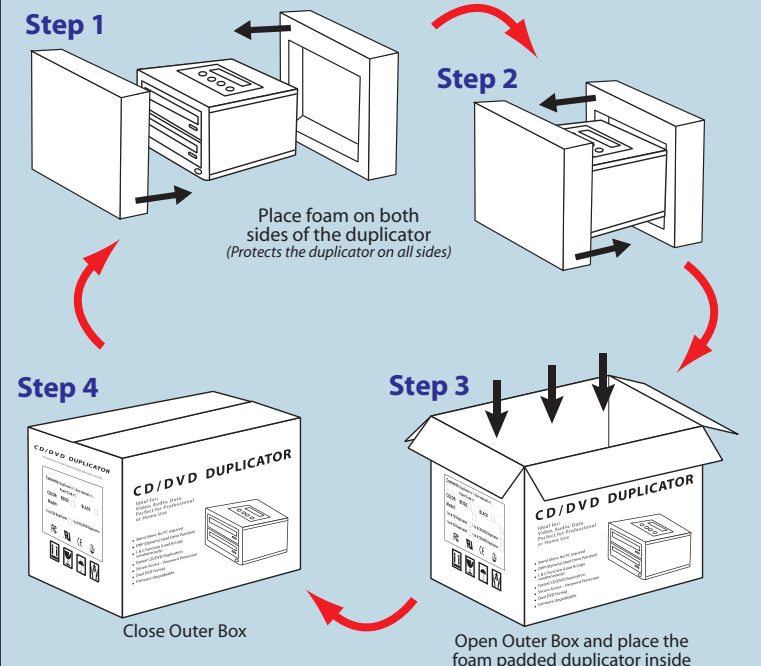
## Package Contents:



\*Requires a computer with Adobe Acrobat® Reader to view properly. (Adobe Acrobat® Reader is free to download at [www.adobe.com](http://www.adobe.com))

## Proper Packing & Unpacking

All units are packed with a sturdy outer box and added inner packing material in order to protect the duplicator from potential shipping damage.



NOTE: Packing may vary depending on duplicator model.